

Plain washers  
for screw and washer assemblies

DIN  
6902

Scheiben für Kombi-Schrauben

Supersedes December 1972 edition.

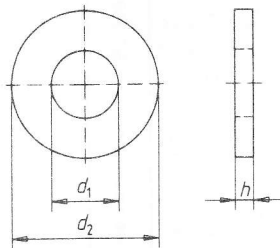
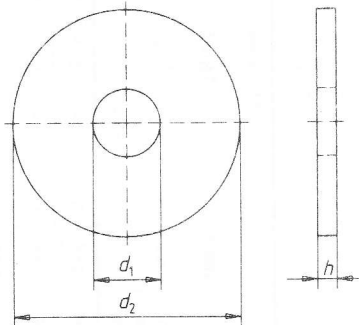
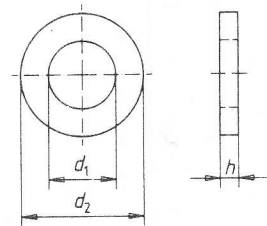
*In keeping with current practice in standards published by the International Organization for Standardization (ISO), a comma has been used throughout as the decimal marker.*

Dimensions in mm

### 1 Scope and field of application

Washers as specified in this standard are intended for use with screw and washer assemblies as specified in DIN 6900 Parts 1 to 3.

### 2 Dimensions

Type A<sup>1)</sup>Type B<sup>1)</sup>Type C<sup>2)</sup>

1) Preferably for use with hexagon head screws.

2) Preferably for use with cheese head screws, pan head screws and hexagon socket head cap screws.

Continued on pages 2 to 4

Table 1.

Nom- inal size	Clearance hole diameter, $d_4$		Outside diameter, $d_2$ <sup>1)</sup>						Thickness, $h$									F or thread size			
	min. nom- inal size	max.	Type A		Type B		Type C		Type A			Type B			Type C				Approximate mass (7,85 kg/dm <sup>3</sup> ), per 1000 units, in kg		
			nom- inal size	max. nom- inal size	min. nom- inal size	max. nom- inal size	min. nom- inal size	max. nom- inal size	min. nom- inal size	max. nom- inal size	min. nom- inal size	max. nom- inal size	min. nom- inal size	max. nom- inal size	min. nom- inal size	max. nom- inal size	Type A		Type B	Type C	
2,25	2,25	2,35	6	5,82	8	7,78	5	4,82	0,6	0,65	0,55	0,8	0,85	0,75	0,6	0,65	0,55	0,11	0,29	0,07	M2,5
2,75	2,75	2,85	7	6,78	9	8,78	6	5,82	0,6	0,65	0,55	0,8	0,85	0,75	0,6	0,65	0,55	0,15	0,36	0,11	M3
3,2	3,2	3,32	8	7,78	11	10,73	7	6,78	0,8	0,85	0,75	0,8	0,85	0,75	0,8	0,85	0,75	0,27	0,55	0,19	M3,5
3,6	3,6	3,72	9	8,78	12	11,73	8	7,78	0,8	0,85	0,75	1	1,06	0,94	0,8	0,85	0,75	0,34	0,81	0,25	M4
4,55	4,55	4,67	10	9,78	15	14,73	9	8,78	1	1,06	0,94	1,6	1,68	1,52	1	1,06	0,94	0,49	2,01	0,37	M5
5,5	5,5	5,62	12	11,73	18	17,73	11	10,73	1,6	1,68	1,52	1,6	1,68	1,52	1,6	1,68	1,52	1,12	2,90	0,89	M6
7,4	7,4	7,55	16	15,73	24	23,67	15	14,73	2	2,09	1,91	2	2,09	1,91	2	2,09	1,91	2,48	6,43	2,10	M8
9,3	9,3	9,52	20	19,67	30	29,67	18	17,73	2,5	2,6	2,4	2,5	2,6	2,4	2,5	2,6	2,4	4,83	12,54	3,66	M10
11	11	11,27	24	23,67	37	36,61	20	19,67	3	3,11	2,89	3	3,11	2,89	3	3,11	2,89	8,41	23,08	5,16	M12

<sup>1)</sup> The outside diameter complies with the relevant specifications for general purpose washers given in ISO 7089:1983, ISO 7092:1983 and ISO 7093:1983.